

Entry Permit to Conservation Area

Based on Indonesian Government Decree No. 59 of 1998, every visitor to the National Park must pay an entrance fee as required for the SIMAKSI (Surat Ijin Masuk Kawasan Konservasi or Entry Permit to Conservation Area) at the nearest authorized park office. The Gunung Leuser National Park Head Office is located in Medan, North Sumatra. The GLNP management consists of three regional offices, six sub-regional offices, and 34 resort offices around the park. The SIMAKSI can be issued in the park head office, regional offices (see list of contacts below), or the Bukit Lawang Visitor Center. The entrance permit fees listed below are for non-commercial visitors.

Visitor	Entrance Fee	Camera	Handycam
Foreigner	IDR 20,000	IDR 50,000	IDR 150,000
Domestic	IDR 2,500	IDR 5,000	IDR 15,000

For More Information, Please Contact:

Gunung Leuser National Park Head Office:
Jln. Selamat No. 137, Kel. Sitirejo III, Medan Ampelas, Medan, 20129, North Sumatra
Tel +62 61 7872919 and Fax +62 61 7864510

Sub-Regional Office Blangkejeren/SPTN III:
Jl. M.Z. Abidin, Blower Blangkejeren, Gayo Lues District, Nangroe Aceh Darussalam
Tel +62 642 21710

Regional Office Tapaktuan/BPTN I:
Jl. Tengku Ben Mahmud No. 65, Tapaktuan, Aceh Selatan District, Nangroe Aceh Darussalam
Tel +62 656 21482

Sub-Regional Office Blangpidie/SPTN I:
Komplek Perkantoran Pemkab Aceh Barat Daya, Desa Keude Poya, Kec. Blang Pidie, Aceh Barat Daya District, Nangroe Aceh Darussalam

Sub-Regional Office Rantau Sialang/SPTN II:
Desa Pasie Lembang, Kec. Kluet Selatan, Aceh Selatan District, Nangroe Aceh Darussalam

Regional Office Kutacane/BPTN II:
Jl. Raya Blangkejeren No. 37, Tanah Merah, Kutacane, Aceh Tenggara District, Nangroe Aceh Darussalam
Tel +62 629 21358

How to Use This Map

All the names indicated on the road are the names of the Sub-Districts. It is the easiest way to track the road network in these two provinces. You may use the indicated sub-district names to find the right way and where you are, because road signs/directions are very rare. Only sub-districts nearby the roads are shown in this map to navigate your way. The icons will help you to find the right tourism and special interest spots in and around the park. Basic and practical information of tourism spots are provided in the back of this map. Websites, emails, telephone numbers, and contact persons are provided in the back page, so you can get further information to arrange your trip.

Please don't throw away this map.
Instead of discarding used maps, please give them to others to read.

This map has been developed by UNESCO Office, Jakarta in collaboration with DESMA Center, Concept and Text: Wihik Mahdayani and Suer Suryadi; Visual Communication Design: Jaang Solala Laiya; Map Development: Bina Purwaningsih/UNESCO Office Jakarta. For more information: www.unesco.org/jakarta, www.gunungleuser.or.id, and www.desmacenter.com

TOURISM MAP



Gunung Leuser National Park
Tropical Rainforest Heritage of Sumatra

SUPPORTED BY:

Discover the Natural Heritage of Gunung Leuser National Park



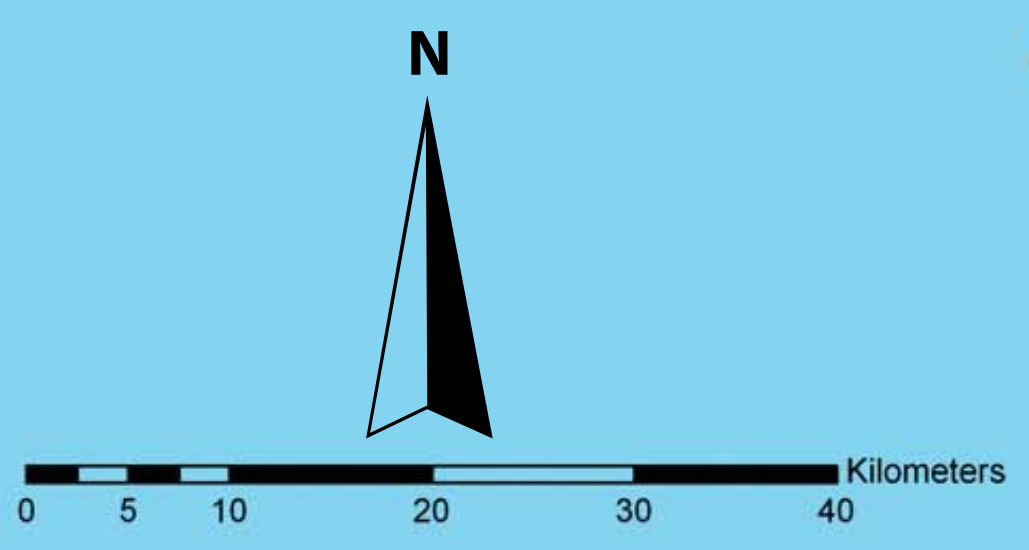
Tourism Spots

Altitudinal Range (Meters)

0 - 500	2000 - 2500
500 - 1000	2500 - 3000
1000 - 1500	> 3000
1500 - 2000	

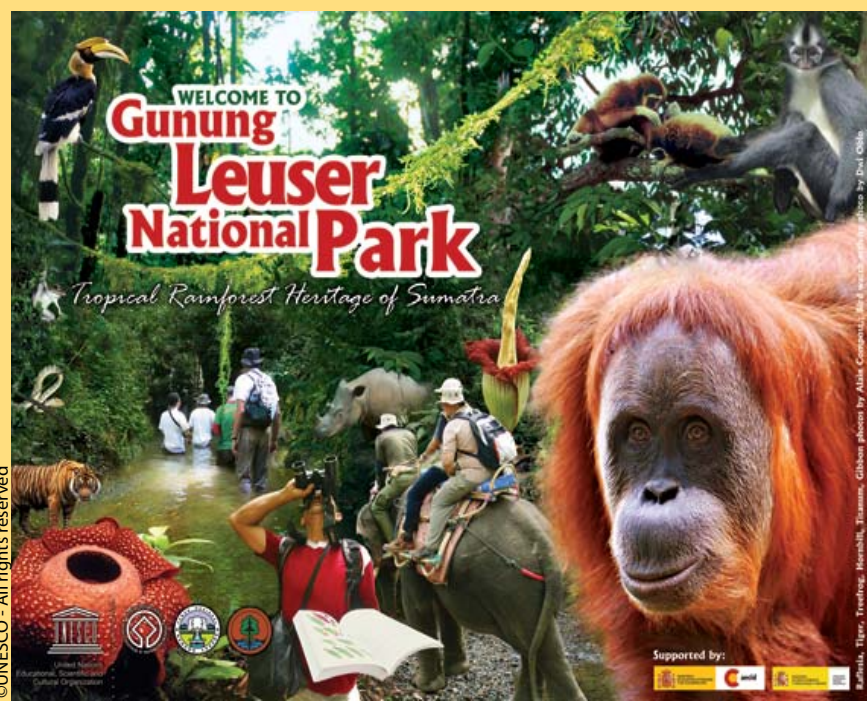
Legend

- Province Capital City
- District Capital City
- Research Station
- Tourism Spot
- Mount
- Airport
- Bus Station
- Sub-regional Office of Gunung Leuser National Park
- Regional Office of Gunung Leuser National Park
- Head Office of Gunung Leuser National Park
- River = Krueung (Kr) = Lawe (L) = Sei/Sungai (S)
- Road
- Province Border
- District Border
- Gunung Leuser National Park Boundary
- Enclave



A Journey to an Environmental and Cultural Paradise

Gunung Leuser National Park



Gunung Leuser National Park (GLNP) was established in 1980 as one of the first five Indonesia's national park, located in the province of North Sumatra and Nanggroe Aceh Darussalam and covering an area of 1,994,692 ha. The park is named after Gunung (Mount) Leuser which is the second highest mountain in Sumatra. GLNP was declared as Biosphere Reserve in 1981 and ASEAN Heritage Park in 1984. Together with Kerinci Seblat National Park and Bukit Barisan Selatan National Park, GLNP was inscribed in the Natural World Heritage List in 2004 as the Southeastern Rainforest Heritage of Sumatra (THRS) cluster site.

The topography of the park varies from sea level up to mountains with the highest peak reaching about 3,404 m asl. The major habitats in GLNP can be classified as mountain forests, alpine woods, primary dipterocarp lowland forest, swamp areas, beach forest and mangrove forest. Therefore, GLNP is suitable home for 130 mammal species, 380 bird species, and up to 4,000 plant species.

GLNP is one of the most famous national parks in Asia for travelers and scientists. This is the only park in the world that harbors the four big Asian mammals: Sumatran Orangutan (*Pongo abelii*), Sumatran Elephant (*Elephas maximus sumatranus*), Sumatran Tiger (*Panthera tigris sumatrae*) and Sumatran Rhino (*Dicerorhinus sumatrensis*). The four species are critically endangered and need special attention from the international community. The park is also home for the world's largest flower (*Rafflesia arnoldii*) and tallest flower (*Amorphophallus titanum*).

Meanwhile, environmental challenges wait along the border and inside the park. Deforestation due to illegal logging and serious agriculture encroachment, road development and tourism facilities become the major controversies, flowing rapidly as the rivers in the park. Despite all of its challenges, the park still offers untrammeled magnificent biodiversity and rich ecosystem to be discovered. How exciting can this park be? It is for you to find out.

Global Status of Gunung Leuser National Park



World Heritage Sites are places of such outstanding cultural and natural significance that they transcend national boundaries and are of importance for present and future generations of humanity. By 2010 there are 7 World Heritage Sites in Indonesia: Tropical Rainforest Heritage of Sumatra, Ujung Kulon National Park (West Java), Komodo National Park (East Nusa Tenggara), Lorentz National Park (Papua), the temples of Prambanan and Borobudur and the Sangiran Early Man site in Central Java. World Heritage Sites are nominated by national governments and inscribed on the World Heritage list by UNESCO. For further information visit www.unesco.org



Biosphere Reserves are sites which demonstrate innovative approaches to conservation and sustainable development. They are nominated by the national government and designated under UNESCO's Man and the Biosphere (MAB) Programme. Indonesia has seven Biosphere Reserves: Gunung Leuser (North Sumatra & Nanggroe Aceh Darussalam), Cibodas (West Java), Komodo (East Nusa Tenggara), Lore Lindu (Central Sulawesi), Tanjung Puting (Central Kalimantan), Siberut Island (West Sumatra), and Giam Siak Kecil-Bukit Batu (Riau). For further information visit www.unesco.org and www.mab-indonesia.org



ASEAN Heritage Parks are protected areas of high conservation importance which are representative of ecosystems in the ASEAN region. They are nominated by national governments and designated by the ASEAN secretariat. So far, there are three ASEAN Heritage Park in Indonesia: Gunung Leuser National Park (North Sumatra & Nanggroe Aceh Darussalam), Kerinci Seblat National Park (West Sumatra, South Sumatra, Jambi, Bengkulu), and Lorentz National Park (Papua). For further info visit www.asean.org/1491.htm

Things you should not miss:

1. Orangutan watching in **Bukit Lawang**
2. Elephant trekking in **Tangkahan**
3. Climbing to **Mount Leuser/Mount Loser**
4. Spotting *Rafflesia arnoldii* and/or *Amorphophallus* sp. in **Ketambe** or **Bukit Lawang**
5. Rafting in **Sei Wampu** or **Alas River**
6. Planting a tree in Ecosystem Restoration Site, in **Sei Serdang**
7. Observing and joining *Saman* Dance in **Ketambe**
8. Tubing in **Bukit Lawang** or **Tangkahan**
9. Sightseeing in pine forests along **Blangkejeren** to **Kedah**
10. Camping in Goa Kambing in **Tangkahan**

Biodiversity in the Park



In GLNP, there are 86 mountains and 364 rivers flowing out from the park, providing various habitats, ecosystems, and landscapes which are suitable for resident and migratory wildlife. From its seashore, swamps, rivers, lakes, caves, lowland, and meadows/subalpine, GLNP is a "One Stop Natural Adventure" for anyone, young or old, students or researchers, foreign or domestic visitor, for a serious or relaxing trip. Why? Because GLNP provides you with biodiversity, cultural diversity, habitat diversity, and landscape diversity. The values of GLNP, direct or indirect, are not just for visitors, but also for the local communities and government.

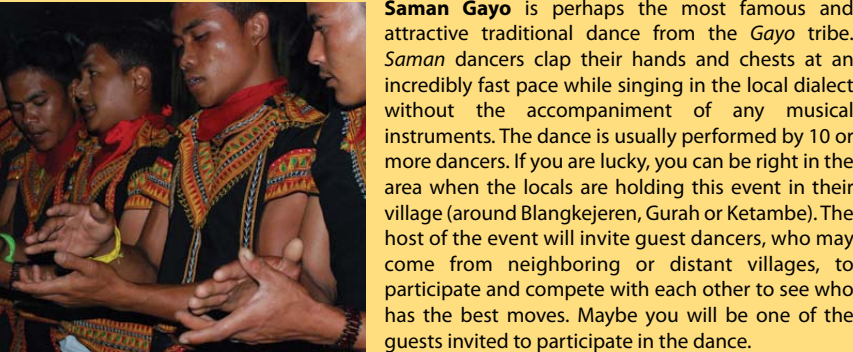
Most scientists agree that Leuser is proven to be a rich yet vulnerable nature's laboratory, and has highly contributed to the conservation of all Indo-Malaya conservation area. Up to 380 species of birds are listed in GLNP (65% of 580 bird species in Sumatra Island). It is also home for 36 of 50 "Sundaland" endemic bird species. The distinctive sounds of honking calls or wing beats in GLNP may come from one out of eight hornbill species, such as the Rhinoceros Hornbill and Helmeted Hornbill. Almost 65% of the 130 species of mammals has been recorded in Leuser. Besides the four magnificent mammals (Orangutan, Elephant, Tiger, and Rhino), small to medium-sized mammals live in harmony in the forest, including seven primate species (Slow Loris, Pig-tailed Macaque and Long-tailed Macaque, Siamang and White-handed Gibbon, Kedih/Thomas' Leaf-monkey, Griffith's Silver Leaf-monkey), Clouded Leopard, Malay Sunbear, Sambar Deer, bats (13 species), and squirrels (17 species). Pythons and King Cobras are common in the park. Marine turtles can be seen in Tapaktuan, while freshwater turtles may be seen in clear rivers such as Alas River. Fals Gharial has been recorded in the park, as well as Monitor Lizard. More than 30 species of fishes can be found in the park, including the famous and delicious fish, locally known as Jurung.

Almost all frugivorous (fruit eaters) are seed disperser, just like farmers in the forest. Plants and animals depend on each other. More than 4,000 plants species are found in the park, including figs. At least 70 species of figs, which fruit all year round, are recognized as keystone species for most wildlife in the tropical rainforest. GLNP is also famous as the habitat of three species of *Rafflesia*, including the world largest flower (up to 1m long petals), *Rafflesia arnoldii*. *Rafflesia* is a parasitic plant that grows on a host vine and produces a smell like rotten meat. Another plant is Titan Arum, the world's tallest (up to 2m tall), *Amorphophallus titanum*. In addition, many economically valuable tree species are also found in the park, such as Dipterocarps or other species valued for non-timber forest products. These are important genetic resources for future development, not for extractive purposes.

Local Culture and Living

Local Events

Traditional horse racing is a local ritual that takes place after the harvest season in Blangkejeren since 1912. Nine to eleven year-old boys ride bare-footed and without proper racing attire or saddle. The local government has built a huge horse racing stadium in the Gayo Lues District Government Office complex because this event is considered very important for the locals and is held annually during the Indonesian Independence Day (17 August).



Saman Gayo is perhaps the most famous and attractive traditional dance from the Gayo tribe. *Saman* dancers clap their hands and chests at an incredibly fast pace while singing in the local dialect without the accompaniment of any musical instruments. The dance is usually performed by 10 or more dancers. If you are lucky, you can be right in the area when the locals are holding this event in their village (around Blangkejeren, Gurah or Ketambe). The host of the event will invite guest dancers, who may come from neighboring or distant villages, to participate and compete with each other to see who has the best moves. Maybe you will be one of the guests invited to participate in the dance.

Traditional Cloths

Karawang Gayo is a traditional Gayo embroidery method that uses gold-colored threads. The embroidery is applied on bright-colored cloth made into placemats, napkins, purses, scarves, dresses, shoes, or even hats. The *karawang* cloths are also applied to traditional Gayo wedding dress. For further information (Bahasa Indonesia only) visit: www.kampungdigitalgayo.com or kampungdigitalgayo@yahoo.com

Ulos Karo is a traditional woven cloth from *Karo*, and is considered an important material to indicate one's identity and status when worn in a ritual or daily ceremony. When you pass the villages in Karo Districts, you may see the women wearing the cloth in their daily lives as well as in traditional ceremonies. The cloth – sarong or scarf – is usually red or other bright colors woven with gold thread. If you are interested in purchasing this cloth, almost every store in the Braštaji fruit market sells the *Ulos Karo*.

Special food and fruits

Halwa is a typical sweet preserve made of local fruits or vegetables, often served in religious events especially during the end of the Islamic fasting ritual of Ramadhan. The dish is prepared by soaking fruits or vegetables in sugar water for three days up to a week to absorb the sugar. The fruits or vegetables become very sweet and crunchy. You can also find *halwa* in some local markets in Medan. Choose from a variety of *halwas*, from mango, papaya, great hog plum or other exotic tropical fruits, often homemade by the local women. Halwa's preparation can also be found in Stabat and Tanjung Pura.

Dodol is a toffee-like delicacy made out coconut milk, rice flour, and palm sugar, and is flavored with local fruits such as durian, jackfruit, or soursop. Its appearance is dark brown and sticky but tastes sweet. The *dodol* takes up to nine hours to be prepared, with non-stop stirring of all the ingredients during the cooking process. You can try a taste of *dodol* in small shops along the Stabat-Tanjung Pura-Besitang road or by directly visiting the Paya Perupuk Village and Berabah Asil Village.

Visitor Tips

While in the park

The park's rich ecosystems and biological diversity, from the Sumatran Orangutan to Sumatran Elephant, from the world's largest flower to the tallest flower, or birds, reptiles, butterflies and tropical plants, are only a few reasons to visit GLNP. However, please be aware that the wildlife species in the park are your host, and therefore respect them as a good guest should. Here are some tips to help you manage your way and keep you safe while in the park.

- Most of the animals are more active in the morning and afternoon, so schedule your activities accordingly.
- Never walk alone in the park, always have a guide with you.
- Follow/stay on the trails in the forest.
- Keep a safe distance from the animals.
- Leave plants and animals as they are. Taking any part or entire plant or animal is against the law and will prevent the next visitor from viewing the park's beautiful wildlife.
- Keep your eyes open for what is there but is often difficult to see (primates, birds, reptiles).
- Learn to recognize the sounds of the forest (insect sounds, frog croaks, bird calls).
- Learn to identify the tracks and animal signs that are left along the trails. For further information please consult GLNP officer/ranger/guide.



Viewing Orangutan



The famous Sumatran Orangutan (*Pongo abelii*) lives in most areas of the Gunung Leuser National Park. The Orangutan Information Center (OIC) provides guideline for viewing Orangutans, and this basic safety information can keep both of you and Orangutans safe. Always have a guide with you. Keep a distance of at least 7 meters from the closest Orangutan, to avoid potential disease transfer. DO NOT TOUCH or FEED Orangutan by any circumstances. Do not call out to the Orangutan to attract their attention. Remaining silent will reward you with greater chance of seeing Orangutans and other wildlife. Do not enter the forest if you feel unwell. For further information visit www.orangutancenter.org

Kedah 01 | 02
03 | 04

Blangkejeren, the capital city of Gayo Lues District, offers a beautiful native pine forest and cool climate along the scenic winding road to and within the town. It is the place to stop by for visitors travelling to Mount Loser and/or Mount Leuser. There are at least 10 simple lodgings in town, such as **Green Mamas** +62 642 21016.

Kedah is a small village, dominated by views of rice fields and mountains of natural pine forest. It is the last accessible point by vehicle before trekking to the forest or climbing Mount Leuser. The village is around 15 km or a 30-minute drive from Blangkejeren.



Kedah Rainforest Lodge is a simple and homey accommodation managed by the locals. The lodge provides basic rooms in wooden cabin just by the river at the forest edge. In the morning, don't be surprised if you're awakened by melodious bird chirps or the walls of the Siamang. In the morning the host will serve you with a cup of strong local coffee or tea with milk to warm you up. The lodge provides various packages for you to choose to explore the GLNP forest. The lodge can arrange your 3-14 days trekking trip to Puncak Angkas, Tobacco Hut, Mount Leuser, and Mount Loser. For more information, contact **Jali** +62 813 6229 1844 or visit www.gunung-leuser-trek.net



Nepenthes spp. (carnivorous pitcher plants), wild orchids, forest moss, waterfalls, and gigantic fig trees are few of the most favorite attractions around Kedah. Visitors can explore the area in a 1 or 2-day hike into the deep forest to observe various wildlife species such as Orangutan, Siamang, and Hornbill. Lucky visitors may be able to see the Sumatran Trogon, King Cobra and Python along the trail to Mount Leuser or Mount Loser. Tigers are nearly impossible to see in the forest, but sometimes you can see their footprints or scratches.

To get to Kedah from Medan or Ketambe, you can rent a car or contact **Pak Ramadan** +62 813 7018 3448, a driver in Medan. It takes eight to nine hours from Medan to Kutacane, and four additional hours to drive to Blangkejeren. You can also take **Nusa Buana Air** to Kutacane by checking the schedule first +62 61 453 4680/+62 813 7694 6990 (Medan Office) or +62 651 333 777/+62 813 7706 3863 (Banda Aceh Office).

Ketambe-Gurah 05 | 06 | 07
08 | 09 | 10

Kutacane is the capital city of Aceh Tenggara District, where travelers transit before heading to Ketambe or Gurah. For staying overnight in Kutacane, there are 11 hotels for you to choose from, including **Sartika Hotel**+62 629 21397. For further information, please stop by at the **GLNP Regional Office in Kutacane**.

Ketambe Resarch Station is located between Ketambe Village and Gurah Village and was established in 1972 for research purposes. Ketambe and the surrounding forest has been explored by scientists around the world to understand the tropical rainforest ecology. Although tourists are not allowed to visit the Ketambe Research Station, Gurah is becoming an important area for visitors to get a first hand feel for the lowland rainforest of GLNP. Within a two-hour walk from Gurah to the hot spring, visitors may observe various mammal trails such as Serow, Sambar Deer, Muntjak Deer, Tiger, as well as leaf monkeys and other primates. Few lucky visitors may be able to see the world's largest flower (*Rafflesia arnoldii*) while blooming.

Ketambe is one of starting points for rafting, jungle trekking, camping, wildlife spotting and climbing Mount Kemir. The village is accessible from Kutacane in about 45 minutes driving (± 29 km). Contact **Johan** +62 852 7086 4580 or your accommodation in Ketambe/Gurah to arrange your unforgettable adventurous trip. Six accommodations scatter along the road in ketambe. **Wisma Cinta Alam** and **Friendship** provide rooms and food for visitors. Ask your accommodation/guide to arrange rafting in Alas River, jungle trekking to a specific site or a climbing to Mount Kemir. For further information: www.schaik.com/track/wisma/cinta_alam.html and www.ketambe.com



Alas River Rafting is a dream for many rafters to conquer. This winding, snake-shaped river is popular for strong-hearted adventurers to face the rapid current. They have one hour, one day, and few days rafting packages. Ask your guide to plan an appropriate route for you.

Gurah is about ten minutes drive from Ketambe with picturesque primary forest along the road. Gurah is another entrance for trekking to hot spring, waterfall and lake. You can also find the **Gurah Recreation Forest** which is a favorite weekend spot for all ages. Visitors can swim, walk along the river bank, go fishing, and have picnic lunch and family gathering. In about five minutes from the recreation forest, you can find the **Gurah Bunglow** (also known as Bunglaw Bustanil Arifin) which provides 10 rooms located nearby Alas River. For more information contact **Alli** +62 813 7566 0761.

Marpunga Hot Spring is located right by the main road between Blangkejeren and Kutacane, and it is a favorite destination among locals.

Marpunga Lake, also called Tiga Sagi Lake, can be visited in a four-day jungle trekking which provides you the opportunity to see the wildlife of GLNP, including elephants. Contact your lodging/guide in Ketambe or Kedah.

To get to Ketambe/Gurah you can take public minibus to Kutacane for about eight to nine hours (± 230 km) from Padang Bulan in Medan. **Nusantara Buana Air** (NBA) flies Medan-Kutacane-Banda Aceh twice a week. To check the schedule of NBA, contact +62 61 453 4680/+62 813 7694 6990 (Medan Office) or +62 651 333 777/+62 813 7706 3863 (Banda Aceh Office). Public transport is available to serve Kutacane-Ketambe-Gurah which may take 45 minutes.

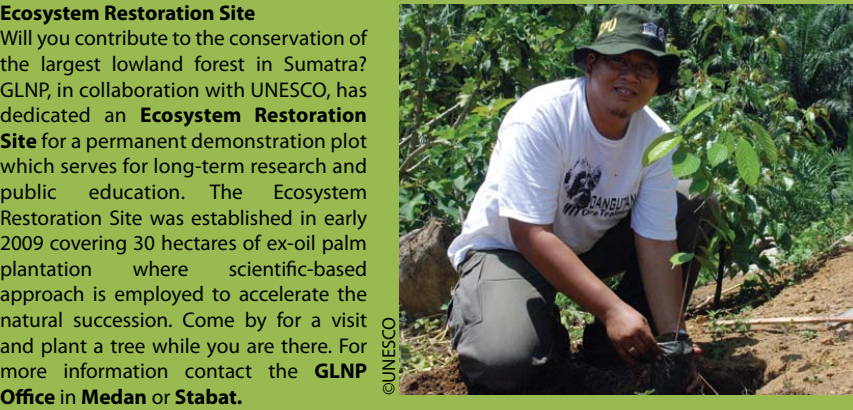
Tangkahan 11 | 12 | 13
14 | 15

Surrounded by secondary forest and oil palm plantation, Tangkahan is where the Buluh and Batang Rivers meet. The forest around Tangkahan provides a great opportunity for visitor to see the natural succession of a tropical rainforest, with lots of vines, rattans, strangling figs, and dipterocarps, as well as to watch the many bird species found along the forest edges. Spotted Doves, Kingfishers, and Eagles are commonly spotted along the road to Tangkahan. Orangutans, Thomas' Leaf-monkeys and Macaques frequently visit forests along the Batang riverbank. Seven tame Elephants and their mahout or trainers stay in Tangkahan to assist park authorities to patrol and mitigate human-elephant conflict while at the same time becoming a tourism attraction and icon for Tangkahan.



Lying between the villages of Namo Sialang and Sei Serdang, Tangkahan emerges as a new paradise for nature lovers. Elephant trekking, caving, fishing, tubing and jungle trek promise to give visitors an unforgettable experience. Visitors are invited to participate in **bathing the elephants at 08.00 to 09.00 and 16.00 to 17.00**. You can also ride an elephant for one hour across the park. At least six down-to-earth lodgings are available in Tangkahan. For further information, contact the **Tangkahan Community Tour Operator, Kristin Bt Sitepu**+62 812 6398 2380/ cto.tangkahan@yahoo.co.id

If you need adventure and pleasure at the same time, the Elephant Jungle Patrol from Tangkahan to Bukit Lawang is an experience waiting to be explored. Visitors can sign up for four days trip of elephant riding, hiking, caving, swimming, and camping inside the park. Further information visit www.elephantjunglepatrol.com or send an email to nalkajah@gmail.com



Ecosystem Restoration Site
Will you contribute to the conservation of the largest lowland forest in Sumatra? GLNP in collaboration with UNESCO has dedicated an **Ecosystem Restoration Site** for a permanent demonstration plot which serves for long-term research and public education. The Ecosystem Restoration Site was established in early 2009 covering 30 hectares of ex-oil palm plantation where scientific-based approach is employed to accelerate the natural succession. Come by for a visit and plant a tree while you are there. For more information contact the **GLNP Office in Medan or Stabat**.

Located 10 km from Tangkahan, the **Sei Glugur hot spring** can be reached by a 1-hour motor bike ride plus a 15 minute walk to the Musam River. Visitors can treat themselves in the natural small pool, which combines hot and cold water from the river. Contact your lodging staff or the Tangkahan CTO to arrange your trip.

To get to Tangkahan you can take public bus for approx. 4 – 5 hours (± 112 km) from Pinang Baris Bus Station in Medan twice a day. Contact your guide, CTO Tangkahan, or travel agents in Medan.

Bukit Lawang 16

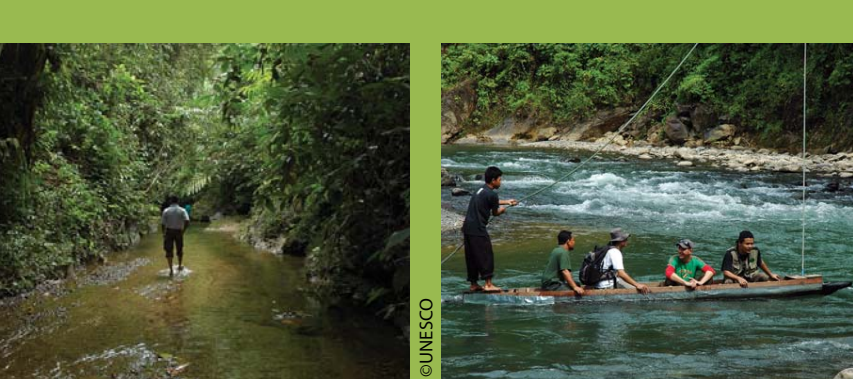
Bukit Lawang has been recognized as a site for Sumatran Orangutan rehabilitation since 1973 until the program was closed in early 1995. Up to 229 ex-captive Orangutans have been released in Bukit Lawang, and visitors can observe them live in the forest with their offspring. Most of them have been successfully released in the jungle, but a few still stay close by the camp. Bukit Lawang is a habitat home for several primates. The Thomas' Leaf-monkey, (*Presbytis thomasi*) is an endemic species (found only of the northern part of Sumatra including GLNP). This delightful black-grey-white monkey lives with forest neighbors such as the Long-tailed Macaque and Pig-tailed Macaque. Siamang and White-handed Gibbon are difficult to see, but their unmistakable morning call can be heard from a distance. Up to 100 bird species can be seen or heard in Bukit Lawang, such as Sunbird, Honey-eater, Pigeons and Eagles. Spend a little longer by fruiting figs and you will be busy counting a number of wildlife feeding from the tree. *Rafflesia* is very rare, but can be found deep in the forest. There is an *Amorphophallus* near the feeding site. You may be lucky and catch a glimpse of the two flowers in bloom.



Bukit Lawang is famous site for international and domestic visitors to see the Sumatran Orangutan. Jungle trekking, rafting, tubing, and swimming are all in the to-do-list while in there. Up to 23 restaurants, 12 lodgings, travel agents, money changers, and souvenir shops stand on the small lane along Bohorok's river bank. Visitors can watch the **Orangutan feeding site at 08.30 – 09.30 and 15.00 – 16.00** every day. From Bukit Lawang, you may want to explore the mystery of the tropical rainforest through jungle trekking to Tangkahan (4 days), Braštaji (3 - 5 days), or Kutacane (7 days). To arrange your trip in Bukit Lawang and adjacent areas, contact **Deedy Irwan** +62 813 9766 8177/deedyirwan@gmail.com or **Rami Murad** +62 813 7660 7655/info@expeditionjungle.com

Bukit Lawang Visitor Center was built following the local architecture, eco-friendly design, and integrated with the surroundings. Admittance is free and you can celebrate and learn about the park's rich biodiversity through wonderful interpretation and displays. Feel free to ask the park officers about the park. Park entrance ticket can be obtained here.

Bukit Lawang Ecotourism is a great choice for you to stay in their pleasant rooms. Some bathrooms are semi-open, providing you with a natural experience. The river-front restaurant serves you organic food grown from its own garden. For further information contact ecotourism_bi@yahoo.com or visit ecotourism.yelweb.org



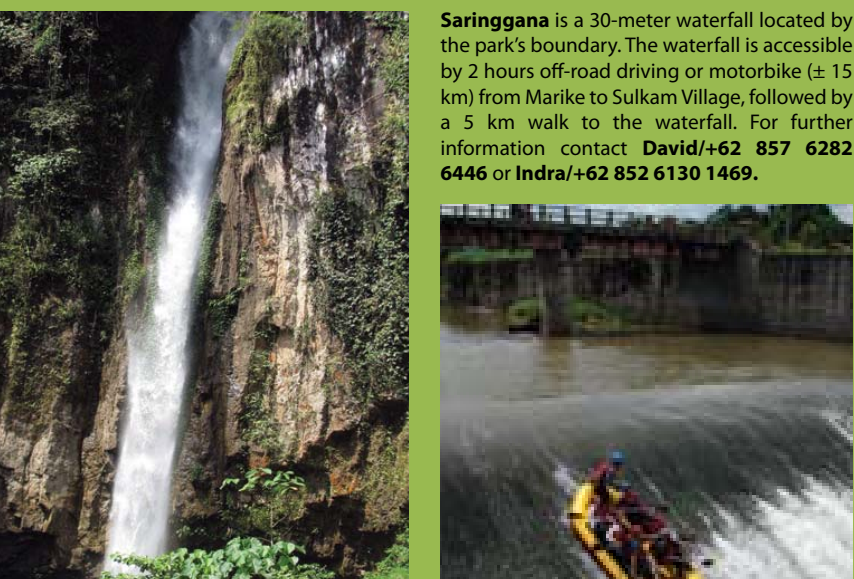
Bukit Lawang Ecotourism is a great choice for you to stay in their pleasant rooms. Some bathrooms are semi-open, providing you with a natural experience. The river-front restaurant serves you organic food grown from its own garden. For further information contact ecotourism_bi@yahoo.com or visit ecotourism.yelweb.org

To get to Bukit Lawang you can take public bus for approx. 3 hours (±90km) from Pinang Baris Station in Medan hourly. Contact your guide or travel agents in Medan.

Marike and Surrounding Areas 17 | 18 | 19
20 | 21 | 22

Simolap hot spring flows down to Lau Murak River and provides the locals with natural hot water that run through a network of bamboo pipelines. From Marike to Simolap Hot Spring you can take ojek (motorcycle taxi) for 30 minutes, then take a short walk through a natural trail, passing rubber plantations, clear streams, and the croplands. For further information, you can stop by at **Marike Resort Office** of GLNP or contact **David** +62 857 6282 6446.

Marike Waterfall, Gelap Cave and Terang Cave are recreational spots for local weekenders. They are located at just an hour walk across rubber plantations from Halaban Village.



Saringgana is a 30-meter waterfall located by the boundary. The waterfall is accessible by 2 hours off-road driving or motorbike (± 15 km) from Marike to Sulkam Village, followed by a 5 km walk to the waterfall. For further information contact **David** +62 857 6282 6446 or **Indra** +62 852 6130 1469.



Padding in Sei Wampu River is one of the top attractions for international and domestic visitors. The most favorite rafting package is a 2.5-hour adventure from Kapras to Pamah Durian or Bohorok. **Sei Wampu white water rafting** offers the magnificent landscape along the river, such as waterfall, hot spring, and wonderful forest. The natural swimming pools along the way invite rafters to jump into the clear waters. Visitors will be surprised by the unique experience of Sumatran rivers. Contact **Joni Kurniawan** of **Rapidplus** for rafting packages at +62 812 6417 356/info@sumatera-adventure.com

Sei Binge is a rafting spot that offers bubbling current or fun rafting for beginners. The surprise will be at the end of the trip, crossing down the 10 m high and 45 degree steep dam. For additional information contact www.sumatera-adventure.com

To get to Marike you can take public bus for approx. 2.5 hours to the direction to Bukit Lawang from Pinang Baris Bus Station in Medan, and stop at Simping Marike/Sempang Tanjung Kasih. You can continue by ojek (motorcycle taxi) for 15 minutes to **Marike Resort Office** of GLNP, and call your local contacts.

Rafting throughout the Year



Rivers in Sumatra are great for rafting all year round. However, several rivers in Gunung Leuser National Park have more difficult terrain where additional expertise is needed to ensure your safety. For your personal protection, ask your guide what you'll need to do and prepare before you explore and challenge the whitewaters for rafting. Brief information from the Indonesian Rafting Federation (IAI) is important for your safety. You must be competent swimmer with the ability to handle yourself. Wear a life jacket and a solid, correctly-fitted helmet. Whitewater rafting contains many hazards which are not always easily recognized. Make sure that you are in a good physical and mental condition, consistent with the difficulties which may be expected. For further information visit www.fajl.org

Get in touch with the local people

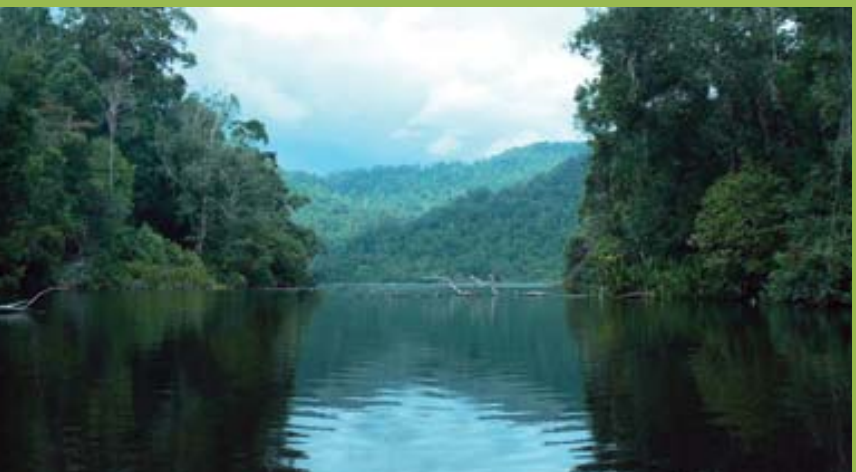


GLNP is surrounded by nine districts. There are six main ethnic groups (Malay, Batak Karo, Batak Pakpak, Gayo, Alas, and Java), with four million people living around the park. Each group has their unique culture which may be represented in their daily life. Ask your guide about existing local customs and respect them. Contribute to the local community by purchasing local products. Bargaining is common, but be fair towards the local people when bargaining for the services or local products. If you want to give something, books and school stationery will be gladly accepted by the children, and general medicines are useful for everyone. Share with the local community if you have any concern on the park's conservation and how the stunning biodiversity and wildlife have brought you here from far away. Obtain as much experience as you can from the local culture.

Laot Bangko Lake 23



Kingfisher, Woodpecker and White-winged Wood Duck (*Cairina scutulata*) start their activities early in the morning around Laot Bangko Lake. Visitors have opportunity to spot many species of waterbirds such as the White Stork. Orangutans can be found in this area. Pythons and Crocodiles live in the lake's boundary and therefore visitors must be careful.



Physical fitness is a must if you decide to visit this under-explored lake. River trekking, fishing and camping are the favorite activities for visitors. There are no tourism facilities or accommodation, so prepare your camping gear and binoculars, and enjoy your stay in a pristine wetland. Contact the nearest **GLNP Offices in Kluet Selatan or Tapaktuan**.

To get to Laot Bangko Lake you can take over night public transport (mini bus) from Jl. Laksana, Medan to Tapaktuan. The best transit site is Subulussalam City, where you may find **Grand Mitra Hotel** (Jl. Teuku Umar/+62 627 31911) to stay. Stop by at Ujung Padang Village, and take a small paddling boat for 8 hours. Nusa Buana Air flies Medan – Tapaktuan – Banda Aceh twice a week. Contact +62 61 453 4680/+62 813 7694 6990 (Medan Office) or +62 651 333 777/+62 813 7706 3863 (Banda Aceh Office).